

SPRING/SUMMER 2018

YOUR WILLOWWOOD EDITION

OMEGA[®]: NEW! ALPHA DESIGN[®]

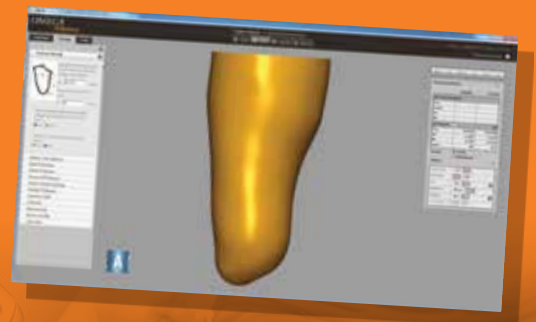
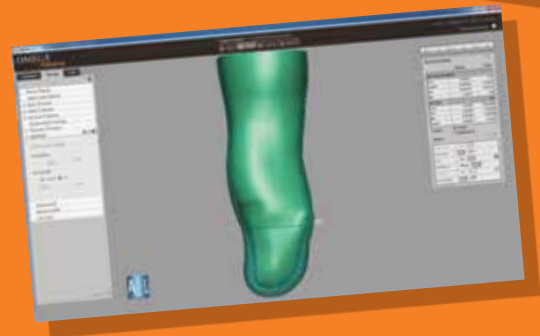
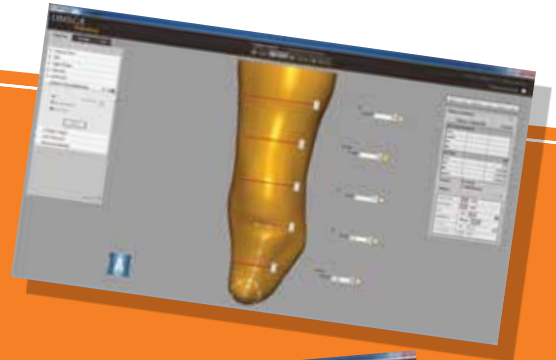
Liner Functionality and Internal Tracing Ability

OMEGA software now offers clinicians the ability to create custom DESIGN Liners directly from OMEGA, which eliminates the need to create a cast, saves time, and enables clinicians to serve patients even better. With this software update clinicians can either create the DESIGN Liner themselves or send a shape file to WillowWood where a DESIGN Technician will create the DESIGN Liner.

Other new DESIGN features include updates to the **Measurements** pane to display **Liner** measurements and the ability to turn the liner on and off in the **Views** pane. In addition, the software now has a **Disarticulation Buildup** tool, which allows the contoured area above a bulbous distal end to be filled with gel.

Users can now use the software to perform internal tracing with the Tracer Pen. This new capability may be used for socket or custom liner creation.

- Tips and tricks for angled offset plates and dual pyramid adapter
- Faster lead times for Alpha Classic[®] Liners
- The story of how one Marine regained his active lifestyle
- New education courses, webinars and resources



Refer to OMEGA[®] New Features Guide
Version 1.6.1 for detailed instructions on using these new features.

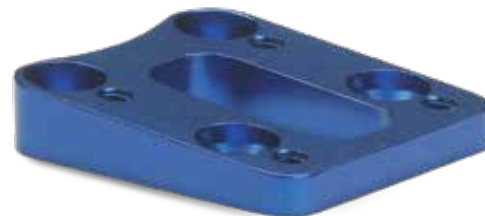
News, Notes and Helpful Information

Tips & Tricks

Endoskeletal components shouldn't be overlooked or undervalued. Developed to ease alignment and minimize the number of necessary components, our product line includes these two versatile options.

Angled Offset Plates

- Allows additional angles and flat plane shift to be added to prostheses quickly and easily
- Cost-effective alternative to remaking the prosthesis or purchasing new componentry to rectify the issues with lack of alignment
- Can be retrofitted or built into the original prosthetic design



Dual Pyramid Adapter

- Connects opposing pyramid receivers together
- Ideal for when connection space is limited
- Can be used when an existing prosthesis is being converted from a component that is no longer available and a two-pyramid receiver connection is necessary



Alpha Classic[®] Liners: Now Faster Lead Times!

In response to customer demand, WillowWood has increased efficiency in liner production to decrease lead times. Of the 382 Alpha Classic Liners that are considered special order, 42 will now be available same day, and an additional 340 liners will now have a faster lead time of just five business days.

See below for a few of our most common Alpha Classic special order liners, reduced from a lead time of ten days to zero days:

INTERFACE MATERIAL	FABRIC	THICKNESS/ STYLE	COLOR	LOCKING	SIZE
Alpha Classic Liner	Original Fabric	6 mm/Uniform	Medium Brown	Locking	Large
Alpha Classic Liner	Original Fabric	9 mm/Uniform	Buff	Locking	Large
Alpha Classic AK Liner	MAX Fabric	AK Standard	Buff	XL Locking	Extra Large
Alpha Classic Liner	Original Fabric	6 mm/Uniform	Medium Brown	Locking	Medium Plus
Alpha Classic Liner	Original Fabric	9 mm/Uniform	Buff	Locking	Medium Plus

For a comprehensive list of our updated Alpha Classic Liner lead times, please contact the WillowWood customer care team or your regional account manager.

OORAH: HOW ONE MARINE FOUND NEW HOPE

David lost his leg in a motorcycle accident in 2004 while on active duty for the Marine Corps at Camp Pendleton. After much trial and error in being fitted for his first socket and foot, David had all but given up on running. His system caused sores, and he couldn't keep up with his battalion during workouts anymore.

Driving home from work one day, he saw another Marine running. "He was straight up sprinting. I'd never seen that before." David introduced himself and found out the Marine's system was from WillowWood. Within five days David was in Ohio at WillowWood.

"Truly my life changed at that point."

David was able to return to work and successfully complete his remaining time with the Marine Corps. A month after completing his time in the military, David became an Albuquerque Police Officer. He has held positions as a training officer, burglary detective, homicide detective, and is now assigned to Internal Affairs. In his spare time, he runs, hunts, and plays with his kids.

"I appreciate being able to be active because for a time, it was taken away from me."

WHAT DAVID WEARS

Pathfinder® II Foot

"With WillowWood, I started with the Pathfinder and it was a super good foot. I put a lot of miles on it and I beat it up. I was still in the Marine Corps and I never had any problems with it. You asked if I would wear something else and no, I won't. Anything less than this? No. It's relatively lightweight and super strong."

Alpha Hybrid® Liner

"The Hybrid Liners are so comfortable. It's soft. It doesn't hurt me at all. It feels like my socket fits better with the Hybrid Liners."



Amputee Resource Center

Our online community for amputees includes real-life stories, how-to guides, product tutorials, and other resources for living life to the fullest.

Learn more about David's experience in our Resource Center!

www.willowwoodco.com/amputee-resources





15441 Scioto Darby Road
P.O. Box 130
Mt. Sterling, OH 43143

Expanded OMEGA®
Capabilities!

OPEN TO
LEARN MORE!

WillowWood 2018 Educational Opportunities

Offered in Ohio, Utah or online, our classes fit the busy clinician schedule.

Webinars

WillowWood One®
Certification (WW1)
July 17

OMEGA® for Business (GP6)
June 19

Alpha Liners for the New CPO (GP2)
July 26

OMEGA® with Roger Wagner,
guest presenter
August 2

Limblogic®
August 16

WillowWood One®
Certification (WW1)
August 23

Classes

WillowWood One® System
Training & Certification (WW2)
June 25
August 13
Mt. Sterling, Ohio

Trade Shows

Amputee Coalition
2018 National Conference
July 12 – 14
Tucson, Arizona

PrimeFare East
July 13 – 14
Nashville, Tennessee

SEE ALL COURSE DESCRIPTIONS
IN OUR EDUCATION &
RESOURCES SECTION ONLINE
AT WILLOWWOODCO.COM

*New instructional videos coming monthly to our website and YouTube channel.
See our newly updated instructional videos page in the education section of our website.*



Contact Us
1.800.848.4930
www.willowwoodco.com
customerservice@owwco.com

The Ohio Willow Wood Company
15441 Scioto Darby Road
P.O. Box 130
Mt. Sterling, Ohio 43143