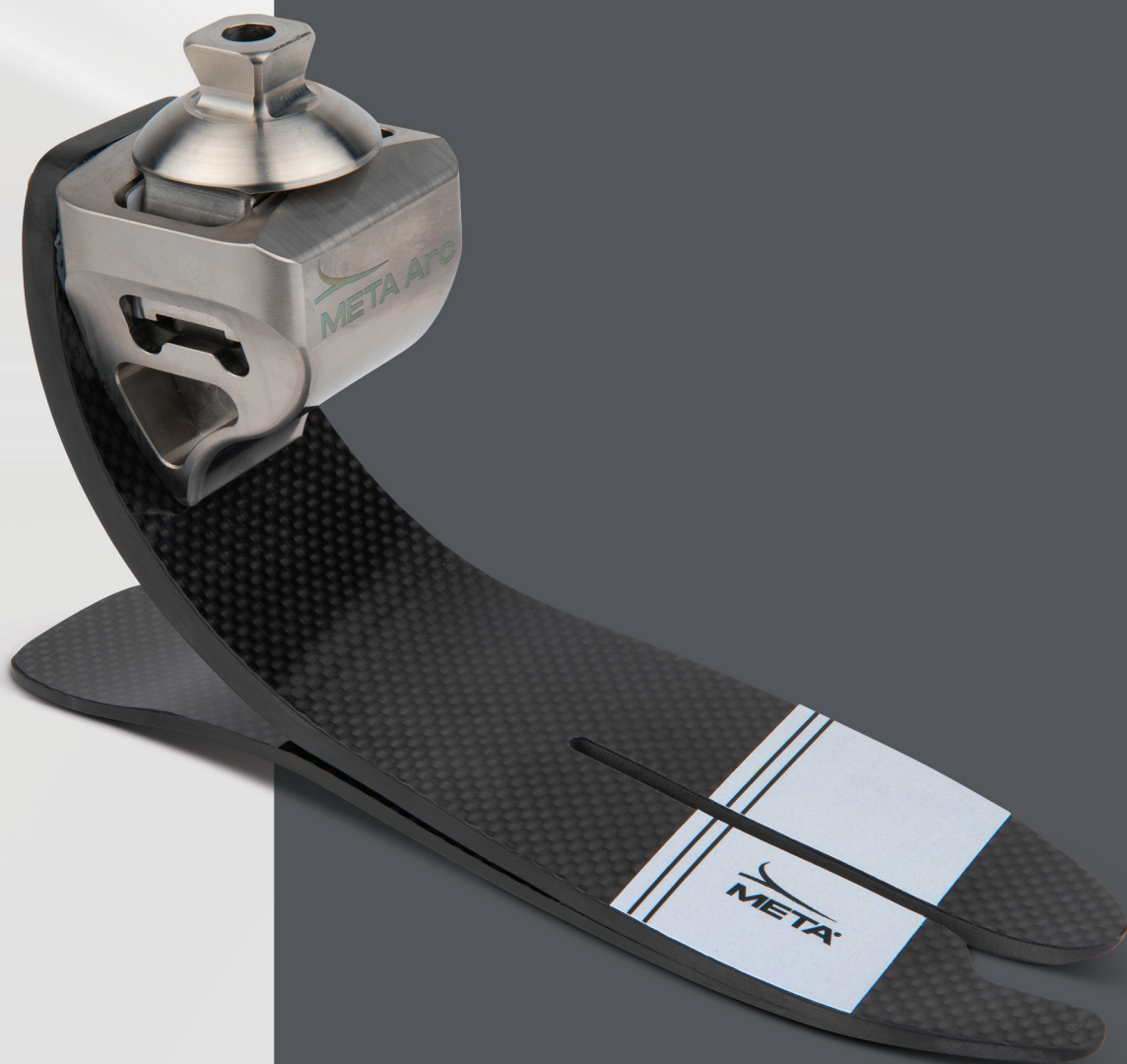




Go beyond.  
Go META.

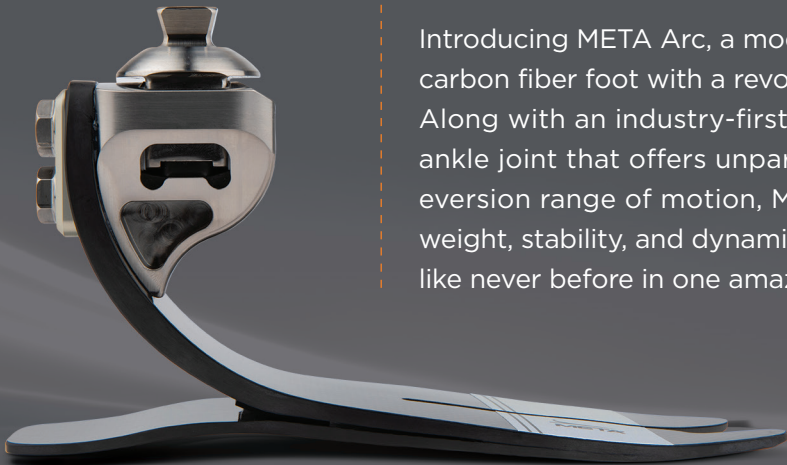




PDAC APPROVED  
L-CODES: L5981 and L5986



One revolutionary foot.  
One giant step forward.



Introducing META Arc, a moderate to high activity carbon fiber foot with a revolutionary unibody design. Along with an industry-first integrated biomimetic ankle joint that offers unparalleled inversion and eversion range of motion, META Arc brings light weight, stability, and dynamic energy return together like never before in one amazing new foot.



UNRELENTING PERFORMANCE.

Industry-first boltless, unibody carbon fiber design provides over 95% energy return. Polycentric ankle provides class-leading multiaxial stability with no loss of energy return.

INSTANT ADAPTATION.

Groundbreaking polycentric ankle design provides immediate adaptation across the widest range of ankle motion.

PRESSURE-FREE STABILITY.

Innovative ankle design decouples ground reaction forces, reducing forces on the residual limb for drama-free, natural-feeling stability.

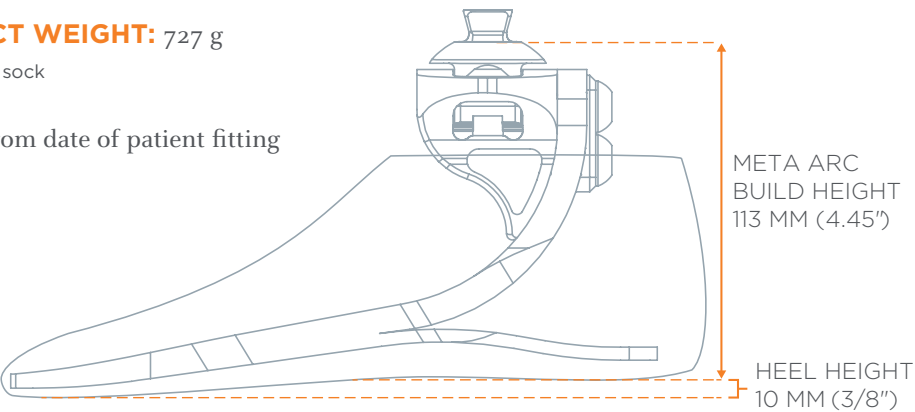
META ARC FOOT: SPECIFICATIONS

HEEL HEIGHT: 10 mm (3/8")

APPROXIMATE PRODUCT WEIGHT: 727 g

\*Size 26 Cat. 5 with foot cover and sock

TRIAL PERIOD: 60 days from date of patient fitting



META ARC FOOT CATEGORY CHART

	Low Impact Level		Medium Impact Level		High Impact Level	
	Sizes 22-24 cm	Sizes 25-30 cm	Sizes 22-24 cm	Sizes 25-30 cm	Sizes 22-24 cm	Sizes 25-30 cm
Adjusted User Weight (patient body weight + loads carried)						
99-115 lbs (45-51 kg)	1	1	1	1	2	2
116-130 lbs (52-58 kg)	1	1	2	2	3	3
131-150 lbs (59-67 kg)	2	2	3	3	4	4
151-170 lbs (68-76 kg)	3	3	4	4	5	5
171-194 lbs (77-87 kg)	4	4	5	5	-	6
195-221 lbs (88-99 kg)	5	5	-	6	-	7
222-256 lbs (100-115 kg)	-	6	-	7	-	8
257-287 lbs (116-130 kg)	-	7	-	8	-	9
288-324 lbs (131-147 kg)	-	8	-	9	-	-
325-365 lbs (148-165 kg)	-	9	-	-	-	-



## HOW TO ORDER

### META Arc Foot with Spectra Sock

Ordering example:  
META Arc Foot, 25 cm, left foot, toe resistance 2

**M002 - 25L - 02**

### Sandal Toe Foot Shell

Ordering example:  
Sandal Toe Foot Shell, 25 cm, left foot, buff

**FS01 - 25LB**

Model	Size of Foot	Foot	Toe Resistance	Size of Foot	Side of Foot	Color
M002 = META Arc Foot	22-30 cm	L = left R = right	01-09 (Refer to the Category Chart)	22-30 cm	L = left R = right	B = Buff T = Tan M = Medium Brown



## The META Lineup

All META feet feature the groundbreaking META-Unibody® design that combines dynamic response with lightweight, hardware-free design suitable for K3-K4 users. The design delivers a smooth roll-over experience and delivers support in mid-terminal stance enhancing stability without compromising function.



### META Core

Smooth rollover and late-stance support for K3-K4 users low-build height and weight.

**PDAC APPROVED:**  
L5981



### META Arc

Biomimetic ankle offers stability and adaptation to terrain. 20° of inversion & eversion.

**PDAC APPROVED:**  
L5981 + L5986



### META Shock

Adaptive shock absorption via integrated shock module 13 mm of vertical displacement.

**PDAC APPROVED:**  
L5987



### META Shock X

Adaptive shock absorption and impact protection via 40° of torsional rotation + 13 mm vertical displacement.

**PDAC APPROVED:**  
L5987 + L5984



### Fiberglass META Shock X

Adaptive shock absorption and impact protection via 40° of torsional rotation + 13 mm vertical displacement with a fiberglass unibody platform.

**PDAC APPROVED:**  
L5987 + L5984

## FOR MORE INFORMATION

CALL 800.848.4930 OR 740.869.3377

OR VISIT [WILLOWWOOD.COM](https://www.willowwood.com)

